

CUSTOMER CONTACT INFORMATION:
 RJAMES FLEET SERVICES
 MARK LIGHT, SERVICE MANAGER
 TEL: 604-792-1102
 CALL 48 HOURS BEFORE CONSTRUCTION

CONSTRUCTION NOTES:
 - FLAGGING ALONG LICKMAN ROAD
 - BONDING AND GROUNDING AS REQUIRED
 - ONLY RELEVANT CABLES & STRUCTURES SHOWN FOR NW#2648554

REFERENCE:
 - FOX#2857683
 - CLI CLWKBCBP

CONSTRUCTION		PERMIT		DESIGN: CONNIE CHU		DR: CCHU		THE WORKS PROPOSED ON THIS DRAWING SHALL AT ALL TIMES REMAIN THE PROPERTY OF TELUS		
REV.	DESCRIPTION:	SUBMITTED DATE:	PH: 778-863-8690	SCALE: AS SHOWN	PROPOSED FEEDER ENTRANCE TO 8106 LICKMAN RD CITY OF CHILLIWACK					
REV.	DESCRIPTION:	RE-SUB DATE:	E: cchu@concepta.net	DATE: 17-07-26						
REV.	DESCRIPTION:	RE-SUB DATE:	ASSOCIATED DRAWINGS							
REV.	DESCRIPTION:	APPROVED:	TELUS: 256127C, 2651304C		C.O. CODE		2648554C		SYSTEM NAME:	
REV.	DESCRIPTION:	DATE:			CLWK		SHEET 1 OF 1		2648554C1-1.dwg	
REV.	DESCRIPTION:	AS CONSTRUCTED DATE:			TELUS OP ENGINEERING BC Encepta		3543 Irving St Burnaby BC V5B 3A7 604-299-3719		A3	
REV.	DESCRIPTION:	CONTRACTOR:	REF: CLWK							

TABLE A - TAPER LENGTHS											
Taper Types (m)	Regulatory Speed Limit before Work Begins (km/h)										
	≤ 50	60	70	80	90	100	110	120	130	140	150
Merge Taper Length	35	55	160	190	210	230	250	280			
Lane Shift Taper Length	30	50	80	100	110	120	130	140			
Downstream Taper Length	30	30	30	30	30	30	30	30			
TCR Signal, and Shoulder Taper Length (min. 5 devices)	5	8	15	15	15	15	15	15			
Minimum Tangent Length between Tapers	30	60	160	190	210	230	250	280			
Run-in Length on Centreline	40	50	60	60	70	80	90	100			

TABLE B - DEVICE SPACING LENGTHS											
Device Spacing (m)	Regulatory Speed Limit before Work Begins (km/h)										
	≤ 50	60	70	80	90	100	110	120	130	140	150
Construction Sign Spacing	A	40	60	80	100	150	150	200	200		
Buffer Space	B	30	40	60	80	110	140	170	200		
Channelling Device Spacing for Tapers	C	10	10	15	15	15	15	15	15		
Channelling Device Spacing on Curves and Tangents	D	10	10	30	30	40	40	40	50		

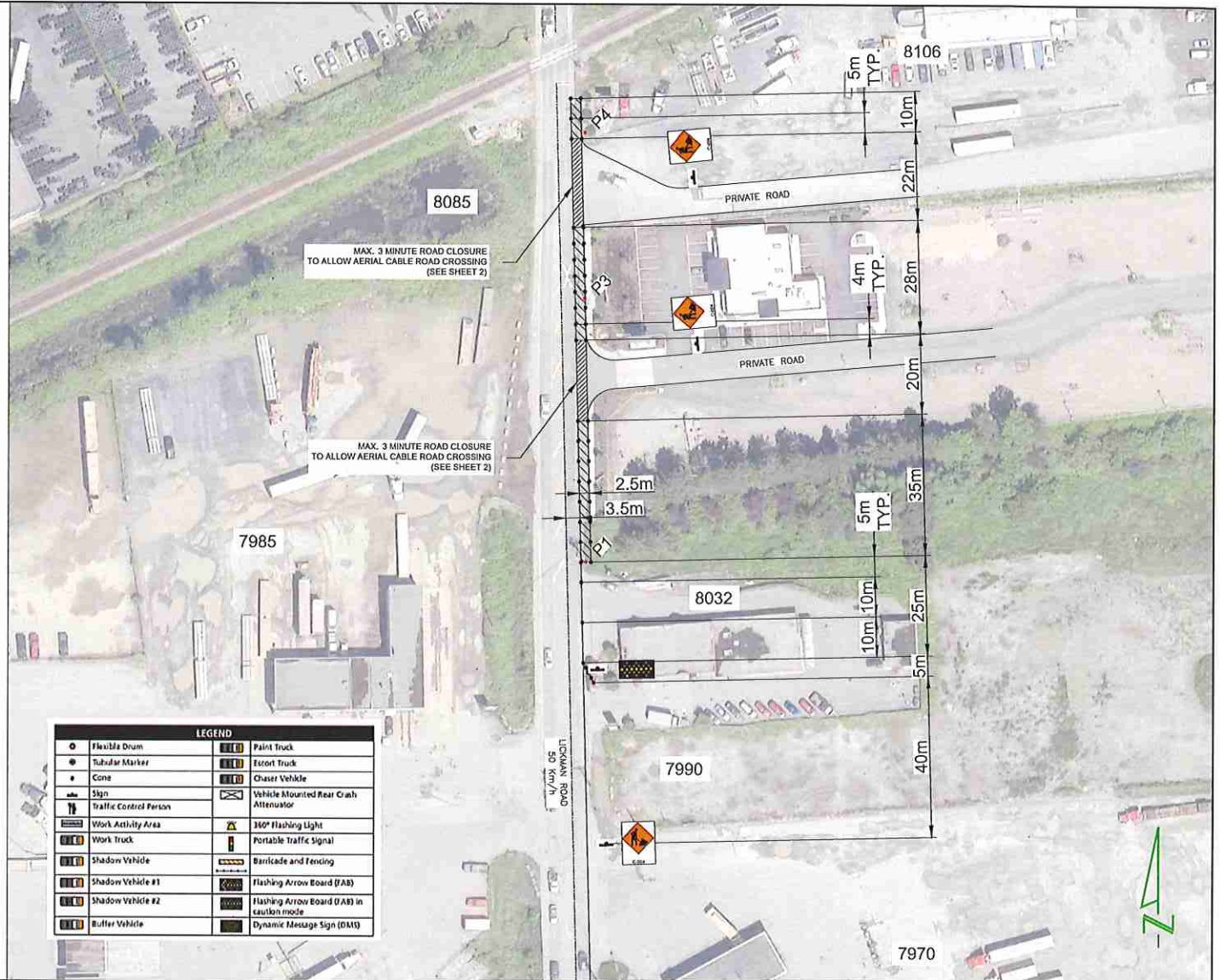
NOTES:

1. THE WORK REQUIRING THE TRAFFIC CONTROL MEASURE INVOLVES THE PLACING AND SPLICING OF FIBER OPTIC CABLE FROM P1 LOCATED ON THE EAST SIDE OF LICKMAN ROAD (APPROX. 135m NORTH FROM INDUSTRIAL WAY) TO P4 LOCATED ON THE EAST SIDE OF LICKMAN ROAD (APPROX. 320m NORTH FROM INDUSTRIAL WAY) IN CHILLIWACK. THE DURATION OF USE OF THIS MEASURE WILL BE UNTIL THE WORK IS COMPLETED.
2. LANE CLOSURES ARE AS NOTED IN THIS LAYOUT.
3. TIMING OF THE WORKS WILL BE FROM 9:00AM TO 3:00 PM.
4. A TEMPORARY ROAD CLOSURE OF A MAX. 3 MINUTE DURATION IS REQUIRED TO ACCOMMODATE AERIAL CABLE PLACING. TCPs WILL BE ON SITE TO PROVIDE DIRECTIONS TO AFFECTED TRAFFIC.
5. LOCATION OF THE WORK ZONE IS AS INDICATED ON THIS PLAN FOR CONSTRUCTION.
6. THE MEASURES SHOWN IN THIS TRAFFIC MANAGEMENT PLAN IS IN ACCORDANCE TO THE "BC TRAFFIC MANAGEMENT MANUAL FOR WORK ON ROADWAYS (2015 INTERIM)". CHANGES TO THIS LAYOUT MAY BE MADE BY THE TRAFFIC CONTROL PERSON IN CHARGE TO REFLECT FIELD CONDITIONS.
7. PRIORITY ACCESS WILL BE GIVEN TO EMERGENCY VEHICLES.
8. ALL DIMENSIONS ARE IN METRES.

CONTACT INFORMATION:

ALEC LUNDE:
C: 778-837-4642

LEGEND	
	Paint Truck
	Escort Truck
	Chaser Vehicle
	Vehicle Mounted Rear Crash Attenuator
	Portable Traffic Signal
	360° Flashing Light
	Barriade and Fencing
	Flashing Arrow Board (FAB)
	Flashing Arrow Board (FAB) in caution mode
	Dynamic Message Sign (DMS)



	BC ONE CALL CALL BEFORE YOU DIG 1 800-474-6888 VANCOUVER AREA 604-257-1840		CONSTRUCTION REV. DESCRIPTION REV. DESCRIPTION REV. DESCRIPTION REV. DESCRIPTION REV. DESCRIPTION REV. DESCRIPTION	PERMIT SUBMITTED DATE RE-SUB DATE RE-SUB DATE APPROVED DATE RE-CONSTRUCTED DATE COUNTERACTION	DESIGN EM 004-539-1442 SCALE: NTS DATE: 05/07/17 ASSOCIATED DRAWINGS 1. 2. 3. REF.	THE WORKS PROVIDED BY THIS TRAFFIC CONTROL LAYOUT AT ALL TIMES REMAIN THE PROPERTY OF TELUS PROPOSED TRAFFIC CONTROL LAYOUT TO ACCOMMODATE TELECOM CABLE PLACING & SPLICING ON THE EAST SIDE OF LICKMAN RD & NORTH OF INDUSTRIAL WAY SYSTEM NAME: 2648554 SHEET 1
--	---	--	---	---	---	--

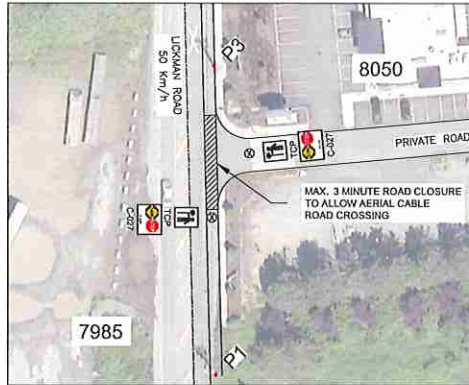
TABLE A - TAPER LENGTHS									
Taper Types (m)	Regulatory Speed Limit before Work Begins (km/h)								
	≤ 50	60	70	80	90	100	110	120	
Merge Taper Length	35	55	160	190	210	230	250	280	
Lane Shift Taper Length	30	50	80	100	110	120	130	140	
Downstream Taper Length	30	30	30	30	30	30	30	30	
TCP, Sign, and Shoulder Taper Length (min. 5 devices)	5	8	15	15	15	15	15	15	
Minimum Tangent Length between Tapers	30	60	160	190	210	230	250	280	
Run-in Length on Centreline	40	50	60	60	70	80	90	100	

TABLE B - DEVICE SPACING LENGTHS									
Device Spacing (m)	Regulatory Speed Limit before Work Begins (km/h)								
	≤ 50	60	70	80	90	100	110	120	
Construction Sign Spacing	A	40	60	80	100	150	200	200	
Buffer Space	B	30	40	60	80	110	140	170	200
Channelizing Device Spacing for Tapers	C	10	10	15	15	15	15	15	
Channelizing Device Spacing on Curves and Tangents	D	10	10	30	30	40	40	40	

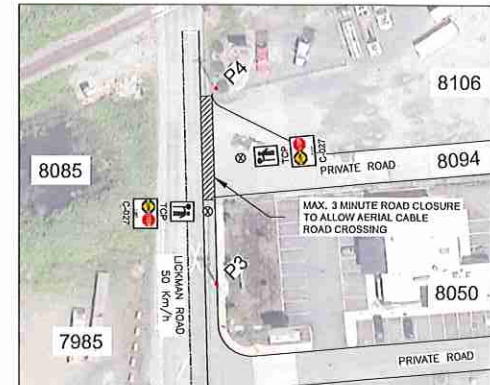
LEGEND		
	Flexible Drum	
	Tubular Marker	
	Cone	
	Sign	
	Traffic Control Person	
	Work Activity Area	
	Work Truck	
	Shadow Vehicle	
	Shadow Vehicle #1	
	Shadow Vehicle #2	
	Buffer Vehicle	

CONTACT INFORMATION:

ALEC LUNDE:
C: 778-837-4642



ROAD CROSSING
FROM P1 TO P3



ROAD CROSSING
FROM P3 TO P4



BC ONE CALL

CALL BEFORE YOU DIG
1 800-474-8866
VANCOUVER AREA
604-257-1510



CONSTRUCTION	PERMIT	DESIGN DR	DWG DR	© THE WORKS PROVIDED ON THIS DRAWING SHALL BE THE PROPERTY OF TELUS LAYOUTS FOR AERIAL CABLE ROAD CROSSINGS
REV. DESCRIPTION	SUBMITTED DATE	004-539-1842	SCALE: NTS	
REV. DESCRIPTION	REV. SUB DATE		DATE: 05/06/17	
REV. DESCRIPTION	REV. SUB DATE		ASSOCIATED DRAWINGS	
REV. DESCRIPTION	APPROVED	1.		
REV. DESCRIPTION	DATE	2.		
REV. DESCRIPTION	RE-CONSTRUCTED DATE	3.		
REV. DESCRIPTION	CONTRACTOR	REF.		

ON THE EAST SIDE OF LICKMAN RD
& NORTH OF INDUSTRIAL WAY

SYSTEM NAME:
264854

SHEET 2



8106 Lickman Rd

Lickman Rd

P4

P1